
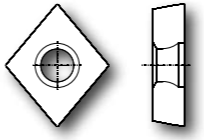
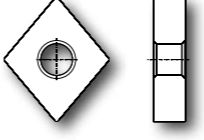
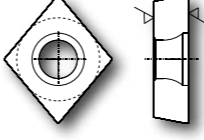
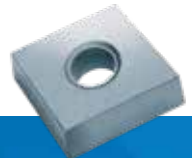




- EN Carbide inserts for PCD and PcBN tipping
- DE Hartmetall-Rohlinge zur PKD- und PcBN-Bestückung
- FR Ébauches de carbure pour le renforcement par PCD et PcBN
- IT Inserti grezzi in metallo duro per riportare PCD e PcBN
- ES Piezas en bruto de metal duro para dotación con punta de PCD y PcBN

- EN Carbide inserts for PCD and PcBN tipping
- DE Hartmetall-Rohlinge zur PKD- und PcBN-Bestückung
- FR Ébauches de carbure pour le renforcement par PCD et PcBN
- IT Inserti grezzi in metallo duro per riportare PCD e PcBN
- ES Piezas en bruto de metal duro para dotación con punta de PCD y PcBN

	<p>EN ISO insert nomenclature                  DE ISO Schneidplatten-Nomenklatur                  FR Nomenclature ISO pour les plaques de coupe                  IT Nomenclatura ISO per inserti da taglio                  ES Nomenclatura inserto ISO</p>	<p><b>42 - 43</b></p>
	<p>EN Blanks for positive inserts                  DE Rohlinge für Positivplatten                  FR Ébauches pour plaques positives                  IT Grezzi per inserti positivi                  ES Piezas en bruto para placas positivas</p>	<p><b>44</b></p>
	<p>EN Blanks for negative inserts                  DE Rohlinge für Negativplatten                  FR Ébauches pour plaques négatives                  IT Grezzi per inserti negativi                  ES Piezas en bruto para placas negativas</p>	<p><b>45</b></p>
	<p>EN Ground inserts                  DE Geschliffene Bestückungsplatten                  FR Ébauches polies                  IT Grezzi rettificati                  ES Piezas en bruto afilado</p>	<p><b>46</b></p>



EN ISO Insert Nomenclature  
 DE ISO Schneidplatten-Nomenklatur  
 FR Nomenclature ISO pour les plaques de coupe  
 IT Nomenclatura ISO per inserti da taglio  
 ES Nomenclatura ISO para la placa de corte

EN Example **CCXW 120402FR**  
 DE Beispiel **CCXW 120402FR**  
 FR Exemple **CCXW 120402FR**  
 IT Esempio **CCXW 120402FR**  
 ES Ejemplo **CCXW 120402FR**

**1. Shape**

**2. Clearance**

EN ISO Insert Nomenclature  
 DE ISO Schneidplatten-Nomenklatur  
 FR Nomenclature ISO pour les plaques de coupe  
 IT Nomenclatura ISO per inserti da taglio  
 ES Nomenclatura ISO para la placa de corte

EN Example **CCXW 120402FR**  
 DE Beispiel **CCXW 120402FR**  
 FR Exemple **CCXW 120402FR**  
 IT Esempio **CCXW 120402FR**  
 ES Ejemplo **CCXW 120402FR**

**5. Insert size**

If less than 10, use 0 in first place  
 (example: 9.525 mm = 09)

**6. Thickness in mm**

01	s = 1.59
T1	s = 1.98
02	s = 2.38
03	s = 3.18
T3	s = 3.97
04	s = 4.76
05	s = 5.56
06	s = 6.35

If less than 10, use 0 in first place  
 (example: 3.18 mm = 03)

**1. Shape**    **2. Clearance**    **3. Tolerance class**    **4. Insert type**    **5. Insert size**    **6. Thickness (mm)**    **7. Corner configuration**    **8. Cutting edge condition**    **9. Cutting direction**

**C** → **C** → **X** → **W**    **12** → **04** → **02** → **F** → **R**

**3. Tolerance class (in mm)**

	m	s	d
A	± 0.005	± 0.025	± 0.025
F	± 0.005	± 0.025	± 0.013
C	± 0.013	± 0.025	± 0.025
H	± 0.013	± 0.025	± 0.013
E	± 0.005	± 0.025	± 0.025
G	± 0.025	± 0.130	± 0.025
J	± 0.005	± 0.025	± 0.05 to 0.15 <sup>1</sup>
K	± 0.013	± 0.025	± 0.05 to 0.15 <sup>1</sup>
L	± 0.025	± 0.025	± 0.05 to 0.15 <sup>1</sup>
M <sup>1</sup>	±0.08 to ±0.20	± 0.130	± 0.05 to 0.15 <sup>1</sup>
N <sup>1</sup>	±0.08 to ±0.20	± 0.25	± 0.05 to 0.15 <sup>1</sup>
U <sup>1</sup>	±0.13 to ±0.38	± 0.130	± 0.08 to 0.15 <sup>1</sup>
X	Blank		

**4. Insert type**

N	
F	
R	
A	
G	
M	
W	
T	
X	Special design

**7. Corner configuration**

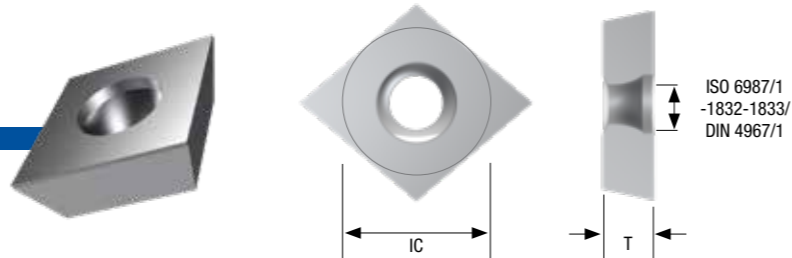
1) Radius	00 = sharp corner 02 = 0.2 mm 04 = 0.4 mm 08 = 0.8 mm 12 = 1.2 mm 16 = 1.6 mm 00 = round insert (inch) M0 = round insert (metr.)
2) For milling inserts Major cutting edge angle:	Wiper edge clearance: A - 3° B - 5° C - 7° D - 15° E - 20° F - 25° G - 30° N - 0° P - 11°

XX = blank,  
r = max. 0.3 mm

**8. Cutting edge condition**

**9. Cutting direction**

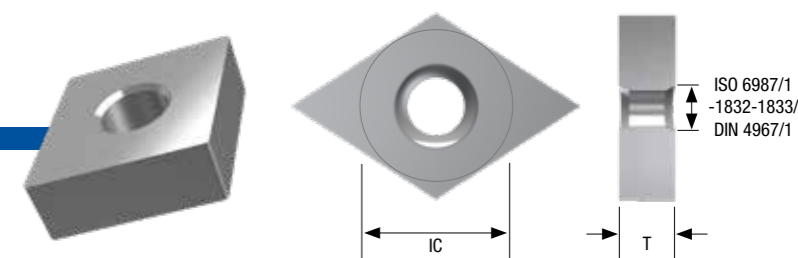
<sup>1</sup>Exact tolerance is determined by the size of the insert.



EN Blanks for positive inserts  
 DE Rohlinge für Positivplatten  
 FR Ébauches pour plaques positives  
 IT Grezzi per inserti positivi  
 ES Piezas en bruto para placas positivas

SHAPE	Dimensions (mm)		positive unground	Art.No.
	IC ± 0.08	T ± 0.08		
C..80° Rhombic	5.56	2.7	CNXW 0502XX-HM	148663
	6.75	2.7	CCXW 0602XX-HM	117880
	6.75	2.7	CNXW 0602XX-HM	124624
	7.6	2.8	CNXW 0702XX-HM	149277
	9.95	4.3	CCXW 09T3XX-HM	117881
	9.95	4.3	CNXW 09T3XX-HM	124625
	13.2	5.15	CCXW 1204XX-HM CPXW 1204XX-HM	118385 122039
D..55° Rhombic	6.75	2.7	DCXW 0702XX-HM DNXW 0702XX-HM	117882 124626
	6.75	2.7		
	9.95	4.3	DCXW 11T3XX-HM DNXW 11T3XX-HM	117883 124627
	9.95	4.3		
E..75° Rhombic	8.35	3.45	ENXW 0803XX-HM	157408
S..90° Square	6.85	3.58	SNXW 0603XX-HM	122323
	10.1	4.3	SCXW 09T3XX-HM SNXW 09T3XX-HM	117884 124642
	10.1	4.3		
	13.2	4.3	SNXW 12T3XX-HM	121142
	13.2	5.15	SCXW 1204XX-HM SNXW 1204XX-HM	119469 126568
T..60° Triangle	5.2	2.7	TPXW 0802XX-HM	119552
	6.0	2.8	TNXW 0902XX-HM	122117
	6.95	2.7	TCXW 1102XX-HM TNXW 1102XX-HM	117885 124628
	6.95	2.7		
	6.95	3.45	TNXW 1103XX-HM TPXW 1103XX-HM	124629 117887
	6.95	3.45		
	10.1	4.3	TCXW 16T3XX-HM TNXW 16T3XX-HM	117886 124630
	10.1	4.3		
V..35° Rhombic	13.1	5.15	TNXW 2204XX-HM	150896
	4.9	2.75	VNXW 0702XX-HM	123834
	6.95	3.45	VCXW 1103XX-HM VNXW 1103XX-HM	117889 124631
	6.95	3.45		
	8.34	3.5	VNXW 1303XX-HM	150493
	10	5.15	VBXW 1604XX-HM VNXW 1604XX-HM	117888 124634

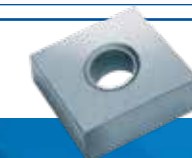
EN Other dimensions upon request.  
 DE Andere Abmessungen auf Anfrage.  
 FR D'autres dimensions disponibles sur demande.  
 IT Altre dimensioni su richiesta.  
 ES Otras dimensiones bajo demanda.

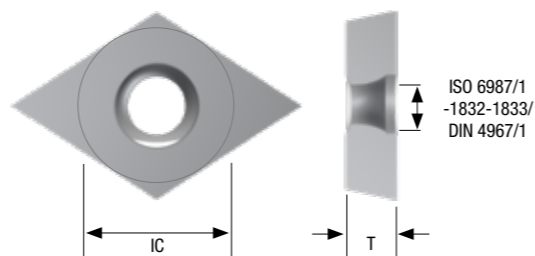


EN Blanks for negative inserts  
 DE Rohlinge für Negativplatten  
 FR Ébauches pour plaques négatives  
 IT Grezzi per inserti negativi  
 ES Piezas en bruto para placas negativas

SHAPE	Dimensions (mm)		negative unground	Art.No.
	IC ± 0.08	T ± 0.08		
C..80° Rhombic	13.2	3.45	CNXA 1203XX-HM	120960
	13.2	5.15	CNXA 1204XX-HM	117890
D..55° Rhombic	13.2	5.15	DNXA 1504XX-HM	117891
	13.2	6.65	DNXA 1506XX-HM	117892
D..55° Rhombic	13.2	5.15	DNXA 1504XX-OF-HM	147918
	13.2	6.65	DNXA 1506XX-OF-HM	147919
S..90° Square	13.2	3.45	SNXA 1203XX-HM	120963
	13.2	5.15	SNXA 1204XX-HM	117893
S..90° Square	13.2	3.45	SNXN 1203XX-HM	117894
	13.2	5.15	SNXN 1204XX-HM	117895
T..60° Triangle	10	3.45	TNXA 1603XX-HM	120828
	10	5.15	TNXA 1604XX-HM	117896
T..60° Triangle	6.95	3.45	TNXN 1103XX-HM	122002
	10	5.15	TNXN 1604XX-HM	117897
V..35° Rhombic	10	5.15	VNXA 1604XX-HM	117898
W..80° Rhombic	13.2	5.15	WNXA 0804XX-HM	117899

EN Other dimensions upon request.  
 DE Andere Abmessungen auf Anfrage.  
 FR D'autres dimensions disponibles sur demande.  
 IT Altre dimensioni su richiesta.  
 ES Otras dimensiones bajo demanda.





ISO 6987/1  
-1832-1833/  
DIN 4967/1

- EN Ground inserts
- DE Geschliffene Bestückungsplatten
- FR Ébauches polies
- IT Grezzi rettificati
- ES Piezas en bruto afilado

EN Ordering examples  
DE Bestellbeispiele  
FR Exemples de commande  
IT Esempi di ordinazione  
ES Ejemplos de pedido

EN DE FR IT ES	Dimensions (mm)			Nomenclature
	IC mm	T mm		
EN Basic insert DE Basisplatte FR Plaque élémentaire IT Inserto di base ES Inserto básico	$\pm 0.08$	$\pm 0.08$		CCXW0602XX-HM
EN Top and bottom ground DE Auf Stärke geschliffen FR Meulage épaisseur IT Rettificato sullo spessore ES Rectificado al espesor	$\pm 0.08$	$\pm 0.02$		CCXW0602XX-FG
EN Peripheral ground DE Umfang geschliffen FR Meulage circonférence IT Rettificato sui lati ES Rectificado periferia	$\pm 0.025$	$\pm 0.02$	R mm	CCGW060202-HM Radius

